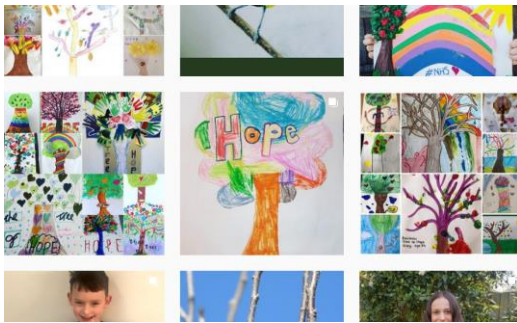


Planting Our Future

**'Re-wilding, re-connecting and re-imaging planting across the borough
with community engagement, education and raising environmental awareness at its heart.'**

Solihull Council have pledged to plant 250,000 trees over the next ten years as part of its commitment to tackle climate change via its 'Planting Our Future' campaign. In the last year, we have worked with numerous partners including local colleges, schools, golf clubs, community groups and charities to find homes for some of the 25,000 trees planted in the borough.

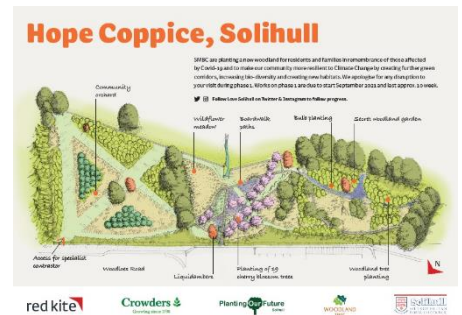
Hope Coppice



In February 2021, 19 cherry trees were planted at the entrance to Hope Coppice as a symbol of COVID remembrance and linked back to the cherry trees that were delivered to families and parish councils that took part in the 'Tree of Hope' competition last year. Families across the borough took part in drawing 'Trees of Hope' which was shared locally and with the NHS Nightingale Hospital located at the NEC and every entry got gifted with a cherry

tree for their garden or school.

The first phase of Hope Coppice saw the planting of just under 1,200 trees, creating a community orchard and woodland. The woodland will be created in remembrance of those affected by COVID-19 and to make our community more resilient to Climate Change by creating further green corridors, increasing bio-diversity and creating new habitats.



The first phase of hard works began in early September and is due to be completed mid-December. Works will include the creation of board walks, woodchip paths, a specially designed arch way and nature play – such as balance logs and stepping beams.

Also within Hope Coppice, Planting Our Future will be working with Wonder Woods Forest School to develop an outdoor area that will be perfect for children to learn and play.

For more information email plantingourfuture@solihull.gov.uk